

TCMA CONFERENCE
Griffith-Logan University
Brisbane. July, 2015

Faith Friendly Chaplaincy in Contemporary Australian Universities

Workshop Part 1: The *Oasis* Model

Geoff Boyce, Oasis Coordinating Chaplain, Flinders University
Alan Larkin, Former Director of International Education,
Flinders University and Oasis Team Member

Faith Friendly Chaplaincy in Contemporary Australian Universities

Workshop Part 1: The *Oasis* Model

Changes in Australian Universities

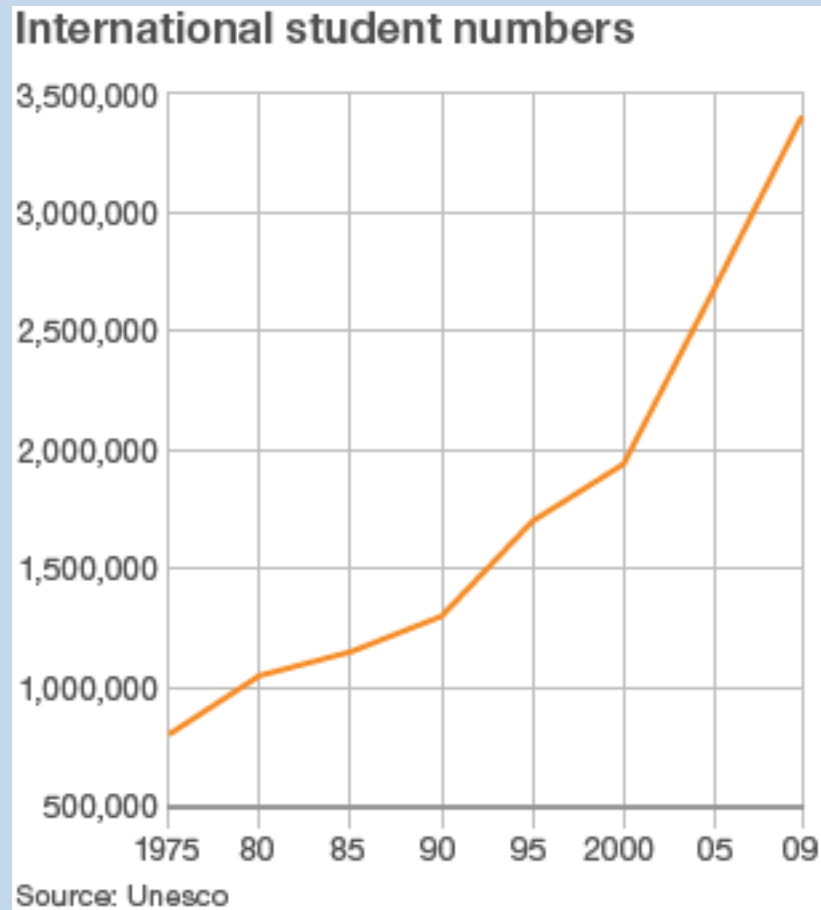
bring

Changes in Chaplaincy

Changes in Australian Universities

Internationalisation

a. changed numbers – global



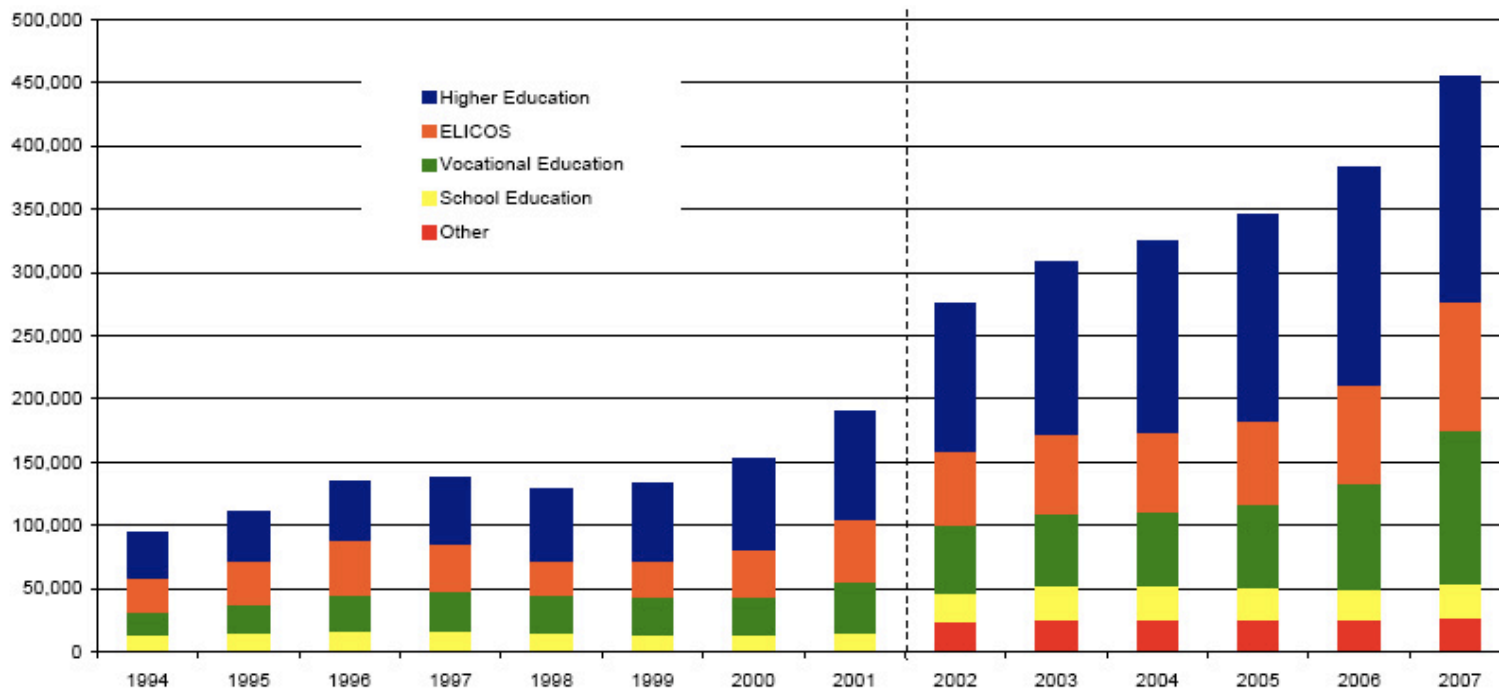
a. changed numbers – Aust.



Australian Government

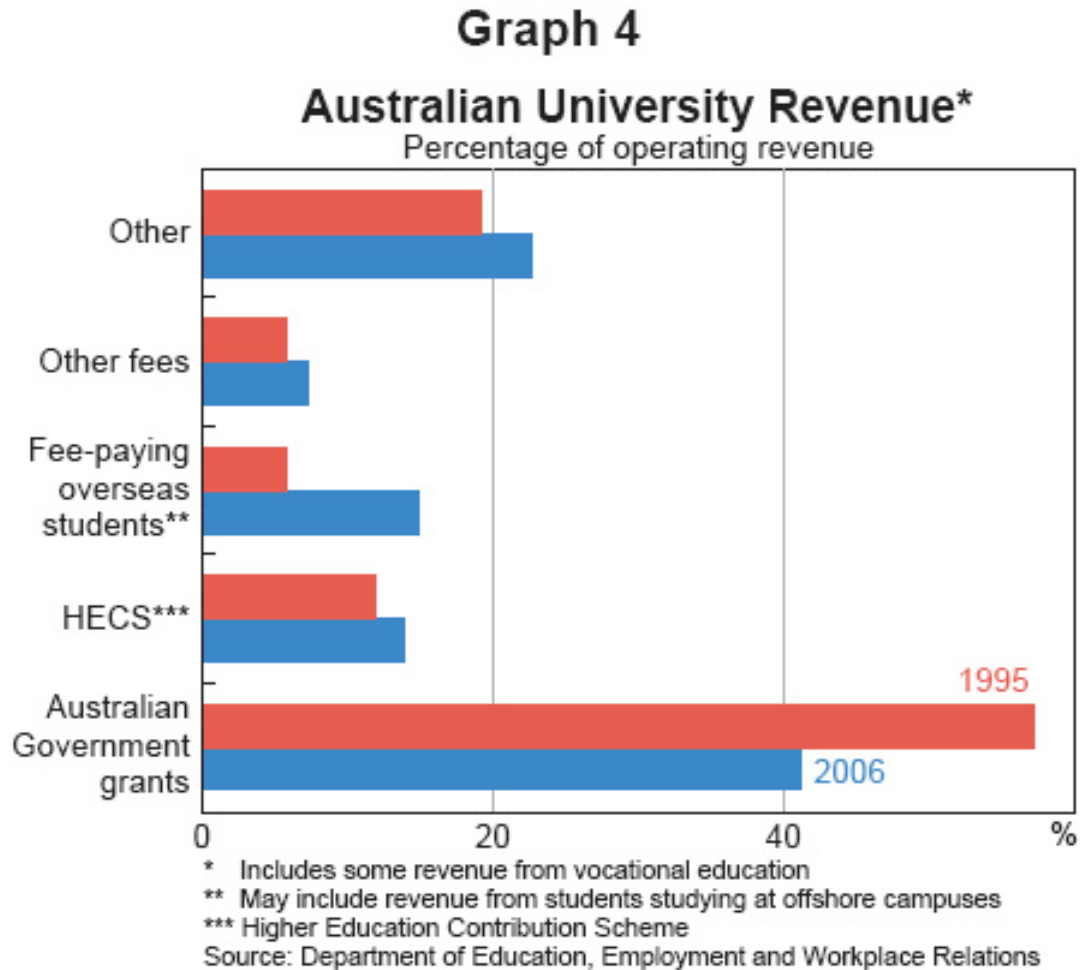
Australian Education International

International Student Enrolments in Australia, 1994–2007



Note: There is a break in series between 2001 and 2002

b. changed funding – Aust.



Changed funding in Australian Higher Education has resulted in a changed student profile:

*increased number of more assertive students
expecting value for money*

c. Religious Affiliation

international students bring their cultures – specific lifestyle and cultural social norms - and religious commitments with them.

Universities adapting

d. Media

global reporting of international events
(print, radio, television, social media)
resulting in increasing awareness of other cultures
and religions

Consequently,
increasing internationalisation
has resulted in
a post-secular, pluralist context
within Higher Education.

This has profound implications for religious
communities engaging in ministry in universities.

...Changes in Chaplaincy



Mono-



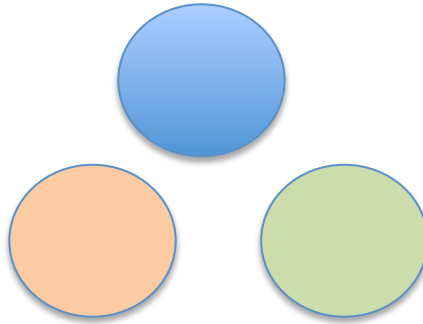
Mono-

Traditional/sectarian



Mono-

Traditional/sectarian



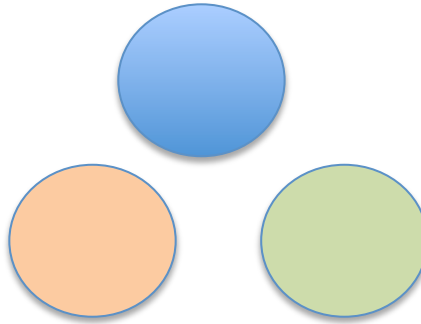
Multi-

*Initial response to
internationalisation
on grounds of equity*



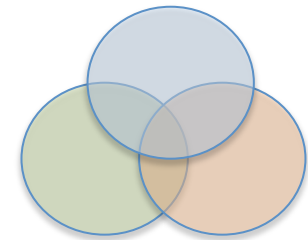
Mono-

Traditional/sectarian



Multi-

Initial response to
internationalisation on
grounds of equity

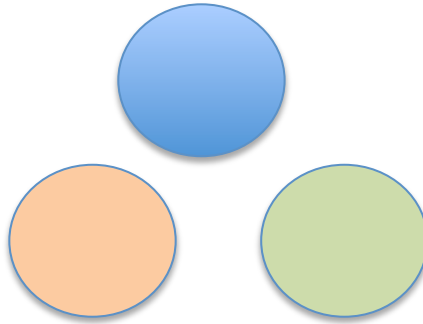


Inter-

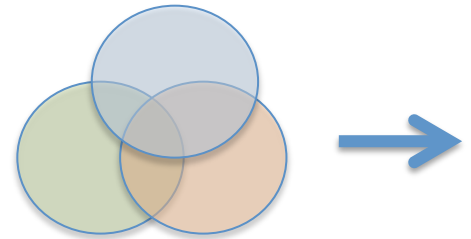
Inevitable
movement on the
basis of positive
relationships
derived from each
religious tradition



Mono-



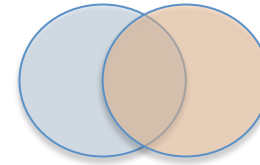
Multi-



Inter-



HOSPITALITY



Hospitality

*... means the creation
of a **free space** where the stranger can
enter and become a friend instead of an
enemy...*

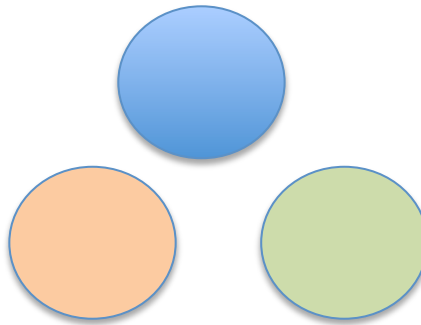
*...where strangers can enter
and discover themselves as created free;
free to sing their own songs,
speak their own languages,
dance their own dances;
free also to leave and follow their own
vocations.*

The health of *inter-* depends on the health of *multi-*
which depends on the health of *mono-*



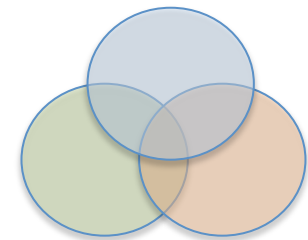
Mono-

Traditional/sectarian



Multi-

Initial response on grounds
of equity



Inter-

Inevitable movement
on the basis of
positive relationships
derived from each
religious tradition

a. From Sectarian (*mono-*) to Universal (*inter-*)

A chaplaincy accepting the post-secular, pluralist context –

what is held from tradition?

what is released?

and what is gained?

a. From Sectarian (*mono-*) to Universal (*inter-*)

From a chaplaincy based on Christian ecclesial assumptions, the priest (individual) performing the functions of the local church in geographically displaced situations - ministering to their own adherents, and one not averse to proselytising (recruitment) and focused on discipleship within each sectarian tradition...

a. From Sectarian (*mono-*) to Universal (*inter-*)

...to a chaplaincy (pluralist team) based on agreed universal values and principles derived from religion, the chaplaincy ministering to the spiritual and religious needs of the whole University.

a. From Sectarian (*mono-*) to Universal (*inter-*)

What is held?

Faith, hope, love...

What is released?

Sectarian:

- *Recruitment (on the grounds of spiritual safety)

- *Discipleship

- *Competition

What is gained?

Trust by the University - increased access

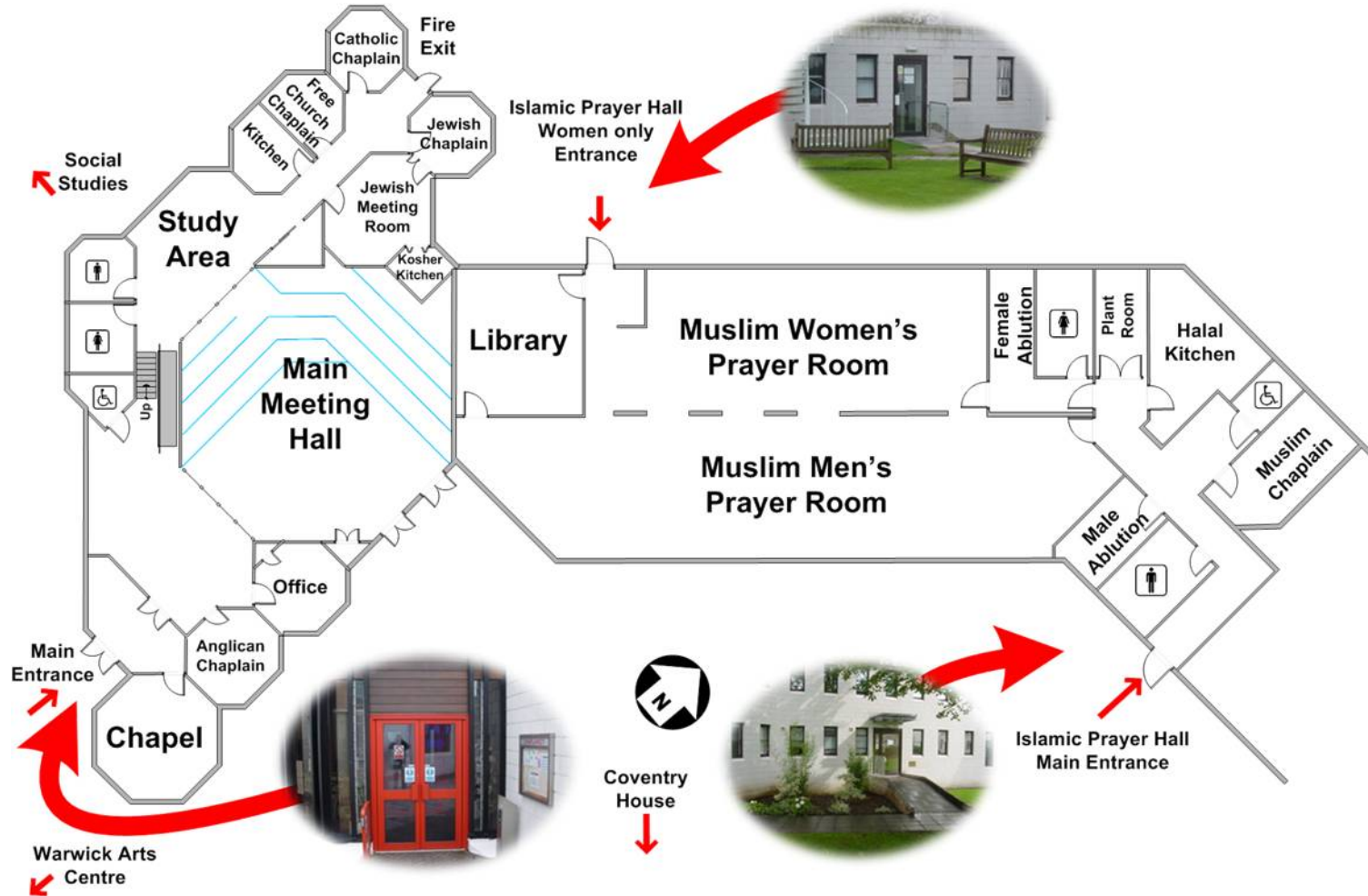
b. Funding

Decrease in resourcing by religious communities – fewer chaplains.

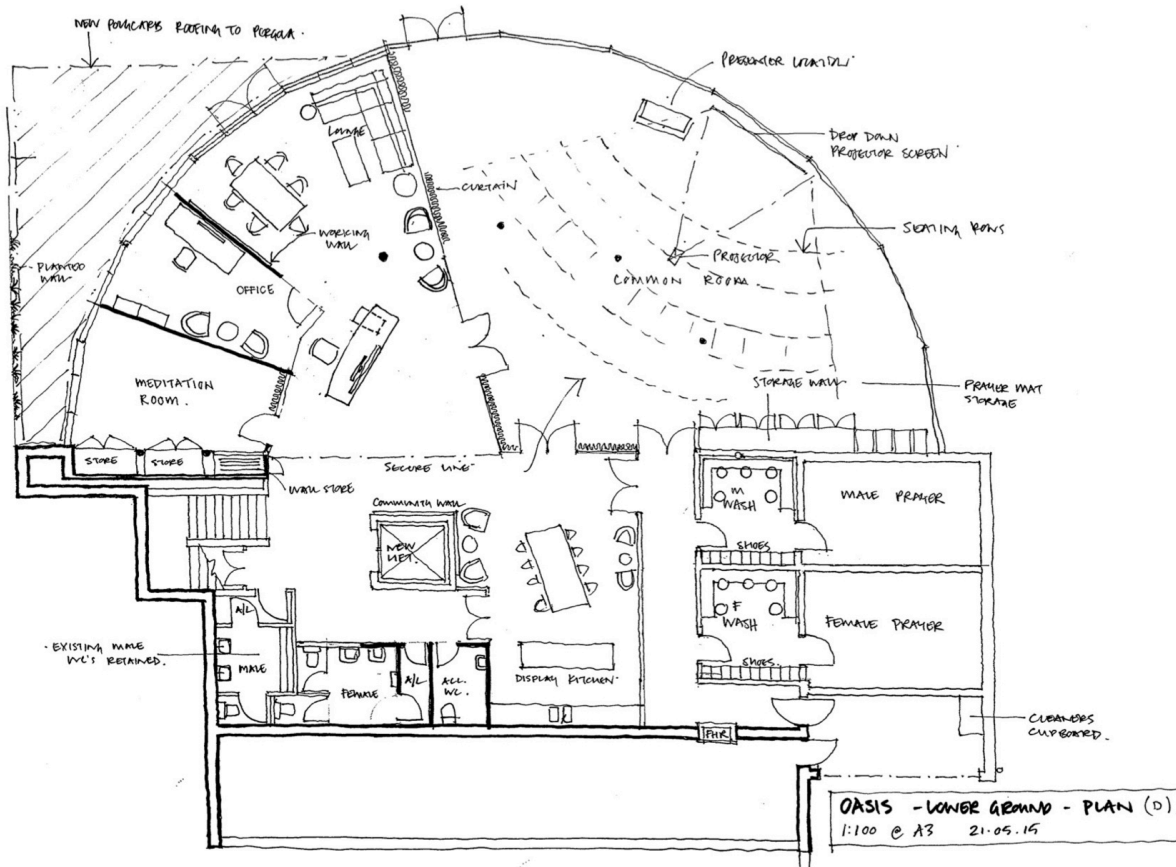
Can others who have no ecclesial adherence be chaplains?

Can chaplaincy be legitimately embraced within the administrative structures of the University?

An Example of *Multi* -



An Example of *Inter* -





Why?



What the world needs now...

How?

Hospitality, Well Being,
Inclusive Spirituality...

...inspiring a culture of care

www.flinders.edu.au/oasis

Students come in to make themselves a tea or coffee, or heat up their lunch in a microwave...



... to meet or make new friends...



... to play or practice their music...



... others, to pray or meditate...



...or to meet as a club or society.



Oasis is a free, non-commercial, friendly space



Drop-in/Reception (medium)



The Quiet Space (medium)



The Common Room (large)

The Common Room is open for lunchtime socialising each weekday from 12 to 2 pm...



...and the outside area is a great place to meet!



Hospitality

*... means the creation
of a **free space** where the stranger can enter
and become a friend instead of an enemy.*



*...where strangers can enter
and discover themselves as created free;
free to sing their own songs,
speak their own languages,
dance their own dances;
free also to leave and follow their own vocations.*



The Hosts – The Oasis Team

The University has appointed

an ***Oasis Coordinating Chaplain*** (Geoff Boyce)



and

an ***Oasis Administrative Officer*** (Lisa Chandler)



A team of volunteers promotes well being within Oasis and the University

Dr Shaowen Qin
(Tonsley)



Dr Abul Farooque
Muslim Chaplain



Kylie Davis
Pagan Chaplain



Dr Sheila James
(Sturt)



Maureen Howland



Dilip Chirmuley
Hindu Chaplain



Rev Dave Williamson
Uniting Chaplain



Alan Larkin



The Oasis Team give support to students and respond to their various needs...



English Conversation for spouses of international students in partnership with International Students Services

Relaxation!
Maureen giving knitting lessons!



... and share their experiences with the wider local, national and international community



Human Rights Symposium



Interfaith Program, Woodville High School



Sheffield Conference, “**Multifaith Chaplaincy in the UK Public Sector**”, from left, **Geoff Boyce**, **Christopher Chester CA**, Chief Executive, South Yorkshire Workplace Chaplaincy and conference host, **Rev Debbie Hodge**, Chief Officer Multi Faith Group for Healthcare Chaplaincy in the National Health Service and **Andrew Copley**, Executive Director for Strategic Planning and Business Development at The Sheffield College, which provided the conference venue.

Oasis offers hospitality, promotes well being and fosters inclusive spirituality - inspiring a culture of care at Flinders University and in the wider community.



... a safe, friendly place to be!



Faith Friendly Chaplaincy in Contemporary Australian Universities

Workshop Part 1: Why *Oasis*?
to be continued!

Changes in Chaplaincy
bring
Changes in Theology

Elements of theological reflection
behind the points made in this presentation may be found in the
blogs and resources at www.travellingchaplain.com